



Collecting sweeper



Wing bucket

WILLE 855c

It is correct to call the stylish Wille 855C a multi-purpose wheel-loader. The capacity of the loader matches the capacity of a traditional wheel-loader of the same size. Considering its large size, the manoeuvrability of the machine is excellent in all conditions. Thanks to its low construction height, the machine can work even on sites where space is limited. Differing from the wheel-loaders, the work attachments of the Wille 855C can be connected to the rear of the machine and on top of the engine space. The excellent output/weight ratio together with the flexible hydraulic system make the machine more versatile than any conventional wheel-loader. The load-sensing hydraulics and the temperature-controlled fan improve the fuel economy and lower the noise level. The spacious cabin, excellent visibility, comfortable seat, sufficient number of storage compartments and the air-conditioning, that is available as an option, make the cabin a pleasant work environment. Thanks to its versatility, the machine is very popular for municipal contract work.

ENGINE

- CAT C4.4 Stage 3A
- 4-cylinder turbo-charged Common Rail Diesel engine with intercooler
- Displacement 4410 cm³
- Output 97 kW (130 hp)/2200 r.p.m.
- Max. torque 516 Nm/1400 r.p.m.
- Fuel tank 100 l

ELECTRIC SYSTEM

- Voltage 12 V
- Battery 145 Ah
- Start motor 3 kW
- Alternator 120 A

TRANSMISSION

- Hydrostatic transmission
- Charge automation of the engine
- Inching pedal
- 2-speed electro-hydraulic range gearbox
- Driving direction to the front and rear is changed electrically
- Driving speed/traction force
0-20 km/h 4720 daN
0-40 km/h 2330 daN
- The speed may vary depending on the national legislation.

NOISE LEVEL

- External below Lwa 104 dBA
- Inside cabin below Lpa 72 dBA

WEIGHT * Bakdäck med vätskefyllning

- Own weight 6480 kg 6975 kg*
- Front axle weight 2740 kg 2740 kg*
- Rear axle weight 3740 kg 4235 kg*
- With standard bucket 6930 kg 7425 kg*

STEERING SYSTEM

- Hydrostatic articulated steering
- Turning angle +/- 39°
- Angle of oscillation +/- 12.5°

AXLES

- Static load-bearing capacity 140 000 N
- Automatic friction locks in the front and rear
- Electro-hydraulic control of the parking brake
- Hydraulically assisted multi-disc brakes in oil-bath

OPERATING HYDRAULICS

- Load-sensing variable displacement pump 145 l/min, 220 bar
- Gear pump 55 l/min, 200 bar
- Volume of hydraulic system about 150 l
- Hydraulic oil cooler, temperature-controlled fan

LOADER

- Hydraulic self-level feature of the loader
- Hydraulic suspension
- Hydraulic pilot control
- Service support for loader-arms
- Loader-arm support for levelling work
- Hydraulic quick-coupler for work attachment
- Optional quick-coupler types: Kunta 500 and Volvo BM

TYRES

- 500/60 R 22.5 (width of the machine 2150 mm)

STANDARD EQUIPMENT

- Motor hydraulics (max. flow 2200 r.p.m.) double-acting to the front 0-145 l/min single-acting to the front 55 l/min single-acting to the front 55-200 l/min single-acting to the rear 55/0/-145 l/min
- 3rd cylinder hydraulics 0-90 l/min
- 6th cylinder hydraulics 0-90 l/min
- Tipper hydraulics to the rear
- Rear mirrors with heating
- Engine heater
- Bottom armours in the front and rear
- Work lights in the front and rear
- Beacon light with foldable shaft
- CD/MP3 player
- Seat with heating
- 2-point safety belt
- Refill pump for hydraulic oil
- Safety cabin ROPS (ISO 3471)
- Safety cabin FOPS (ISO 3449 1365 J)
- Towing hitch
- Adjustable steering wheel
- Roof window
- Reverse alarm
- Mains switch
- Brackets for work attachments above the engine space
- Electric control of work attachments
- Rear window wiper and washer

OPTIONAL EQUIPMENT

- Control with lever
- 5th cylinder hydraulics
- 6th cylinder hydraulics
- Hydraulic oil heater
- Air-conditioning
- Rear-lift with hydraulic hitch including cylinder hydraulics and float-position - lifting force to the upper position 34 kN - thrust force with rear blade 17,7 kN
- Manually operated inching valve
- Central pressure lubrication
- Air-cushioned seat
- Readiness for cabin heater
- Brake valve for trailer
- Float-position for loader
- Elevated cabin 160 mm
- FOPS-roof (ISO 3449 11600 J)
- Counter-weight 400 kg
- 460/65R24 (width of the machine 2130 mm)

WORK ATTACHMENTS (manufactured by Vilakone)

- Soil bucket
- Snow bucket
- Wing bucket
- Leave bucket
- Sand spreader
- Platform-mounted tank with tipper
- Sprinkling tank
- Water tank for high-pressure washing
- Rotary brush
- Collecting sweeper
- Hydraulic ice blade
- Forklift forks
- Access platform
- Excavator



Hydraulic rear-blade



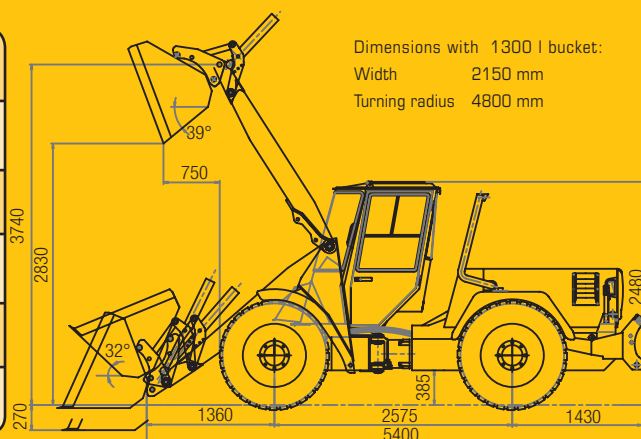
Brushwood chopper



Ice breaker

TECHNICAL DATA

	FRONT FACE OF THE QUICK-COUPLER	BUCKET 1300 L	DISTANCE TO CENTRE OF GRAVITY 500 mm
Lifting force lower position, kN	65,8	61,4	51,6
Lifting force upper position, kN	40,9	36,5	31,3
Rated transport capacity, kg		1705* 1925**	2220* (even surface) 2450** (even surface)
Tipping load kg, with straight/turned machine	4405/3855* 4900/4285**	3960/3410* 4455/3850**	3260/2780* 3660/3060**
Break-out force of the bucket, kN		34,3	



* with rear-tilt, without counter-weight. According to the ISO 8313 and EN 474-3 standards
** with rear-lift and rear tyres with liquid filling